



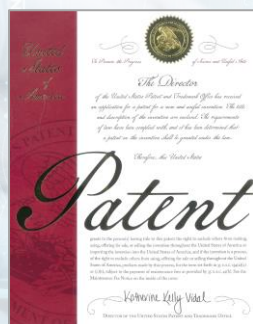
EMTAKE Inc.

Technology leadership in detection systems protecting life and property from disasters and diseases caused by rapid climate, environment and industrial changes

- Safety-Care Systems
- Health-Care Systems

[Company Capability]

- IP : Registered patent : 9 (Korea 7, USA 2)
Applied patent : 3 (Korea 2, USA 1)
- Registered Brand : 5 (Korea, US, China)
- Export History : US, China, Thai, Vietnam etc.



[Contact]

- Phone : +82-2-6012-6505
- E-mail : email@emtake.com
- Homepage : www.emtake.com
- Address : 289, Pangyo, Sungnam City, R.O. Korea

The product functions, performance, and design specified in this brochure may differ from the actual products.



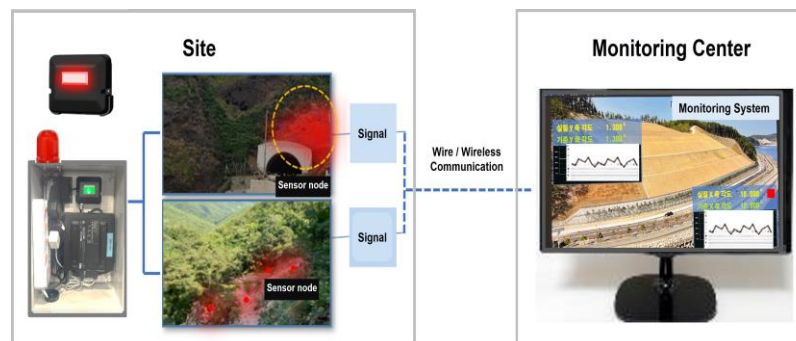
Building/Land Collapse sign detecting Sensor & System

On Sale

Made in Korea



- ◆ High cost-effective detecting system
- ◆ Wireless remote monitoring system, Easy to install
- ◆ Real-time, High accuracy, Prevent malfunction
- ◆ Place : Construction, Tunnel, Mine, Bridge, Relics, Tunnel, Steep slope, Earthquake



LED	High Brightness RED LED
Sensor Sensitivity	Displacement Sensor / Rotation : 0.01 °
Button / Port	Power / Alarm, Data, Power(DC 9V)
Operating Env.	-30 °C ~ 70 °C, Waterproof
Network	900Mhz, LoRa, LTE, Ethernet(Wired)
Monitoring	Server & Monitoring Program
Customizing	According to customer requirements
References	Hyundai, Hanjin, DL, LG, Incheon City, Jeju City, National Park, Express Road



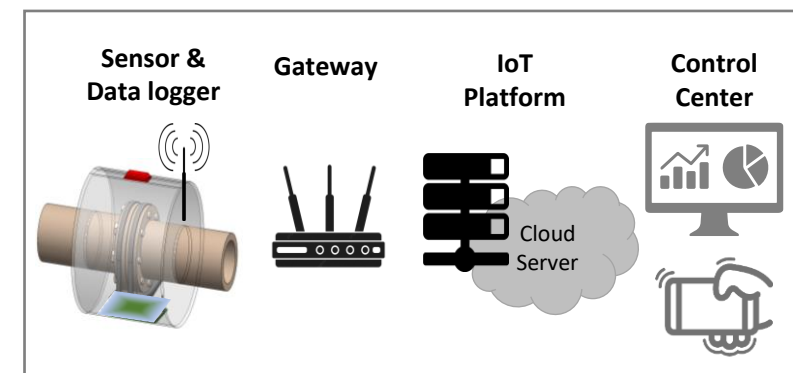
Toxic Chemical / Gas leak detecting Sensor & System

On Sale

Made in Korea



- ◆ High cost-effective leak detecting system
- ◆ Wireless remote monitoring & Alert system
- ◆ High accuracy, Low power(Battery), Easy to install
- ◆ Place : Chemical/Oil/Semiconductor Factories (Pipe's Flange/Valve)



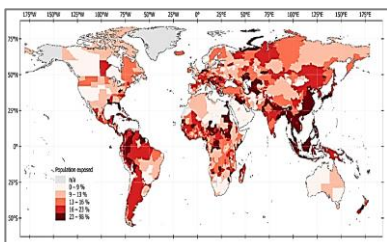
Detecting Chemical	Toxic Chemicals, Gas (option)
Sensor	Dual detecting Sensors
Battery	DC 9V x 4 units (operating 3 year)
Operating Env.	-30 °C ~ 70 °C, Waterproof
Network	Wireless (900Mhz/LoRa) & Ethernet
Monitoring System	Server & Monitoring Program
Customizing	According to customer requirements
References	LG Chemical



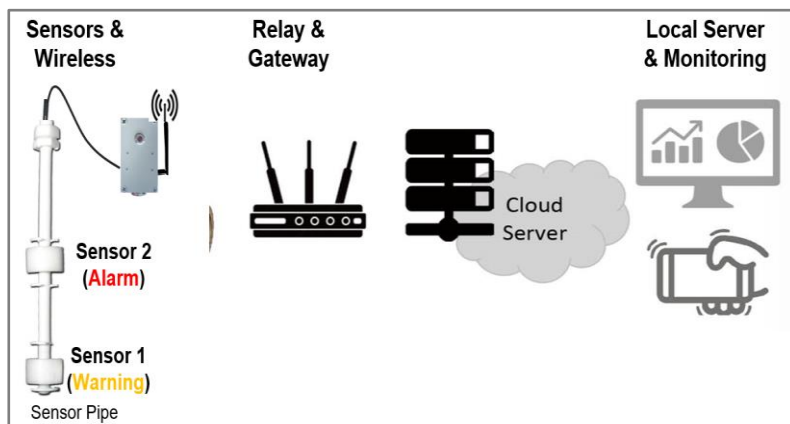
Water level & Flood sign detecting Sensor & System

On Sale

Made in Korea



- ◆ High cost-effective Water/Flood detecting system
- ◆ Real-time, High accuracy, Prevent malfunction
- ◆ Easy to install : No Cable , Wireless, Low Power
- ◆ Place : Underground structures, Riverbanks, Dam, Reservoir, Tunnel, Bridge, Subway



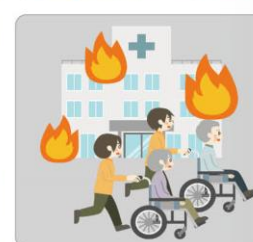
Sensor	Dual detecting Sensors Water level rise rate measurement
Power	DC 9V (operating 3 years) or AC
Operating Env.	-30 °C ~ 70 °C / Waterproof
Network	900Mhz, LoRa, LTE / Ethernet
Monitoring System	Server & Monitoring Program
Customizing	According to customer requirements



Fire sign detecting IR Camera & auto Fire Extinguisher

On Sale

Made in Korea



- ◆ Real-time fire sign detection before fire ignition
- ◆ Affordable, high accuracy, easy to operate
- ◆ Compatible with existing CCTV system
- ◆ **[Accessory] Fire extinguishing Tube & Pad**



Sensor	80 x 60 Micro Bolometer Array IR
Lens angle / NETD	90° / 30° Lens / 100 mK
Measure Temp.	- 10 ~ 100 °C (option ~ 350°C)
Ambient Temperature	-10 ~ 50°C (option ~ 100°C)
Protocol / Video	ONVIF, H.264, Raw Data / Ethernet
Monitoring System	Server, Monitoring Program
References	S1, LG, Shinsegae, Hanwha, Starfield
[Accessory] Auto. fire extinguisher	Operates at 100 ~ 120°C, Select size, Class A/B/C fire, Eco & Harmful



Vital Sensing Healthcare Baby Camera for sleep

On Sale

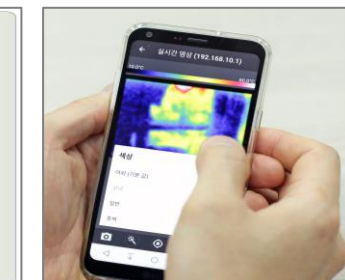
Made in Korea

'MOM-i' is an innovative baby care camera that checks our baby's health status in real time while baby sleeps.



GOLDKIZ

- ◆ Enjoy a baby HD video on a smartphone App.
- ◆ Vital Sensors : Thermal Image, Radar
- ◆ Body Temp., Breath & Cry detection
- ◆ Check the environment of a sleeping baby
- ◆ Send alerts to my smartphone in real time
- ◆ Monitoring & Supporting Multi Cameras
- ◆ Supporting 3rd Party Contents service



Thermal	4,800 Pixel IR Sensor, 90° Lens, Blackbody
Radar	60GHz Radar Sensor
Image	HD CMOS Sensor, 90° Lens, IR Lamp
Env. Sensor	Thermometer, Hygrometer, Microphone
Network	RJ45, WiFi / P2P, Message, Log in
Storage	32GB (Auto. Video save, Play)
Sound	Built in 5 types of sleep-inducing sound